

# DME EJECTOR HOUSINGS



**DME offers multiple types of 3-piece Ejector Housings to meet the needs of different applications and lead times.** Made from quality DME #1 steel which provides approximately 25% greater tensile strength than typical low-carbon warehouse steel, easily machinable and economically priced.

## **DME XPress™ Ejector Housings, Ejector Bars and Retainers**

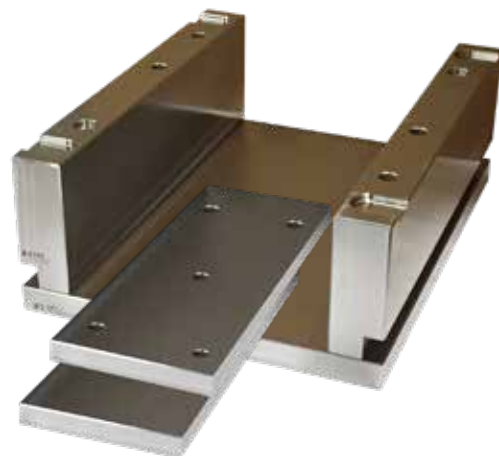
DME XPress Ejector Housings, Ejector Bars and Retainers are typically **available off-the-shelf for same or next day shipment.**

### **XPress Housings:**

- » Available in 23 standard mold sizes
- » Assembled with Shoulder Bolts
- » Predrilled for Assembly Screws and Leader Pin Vents

### **Xpress Ejector Bars & Retainers:**

- » Predrilled for Return Pins and Stop Pins



## **Plain Ejector Housings, Ejector Bars and Retainers**

No machining for pins, screws or vents is included. Available on the DME eSTORE for ease of quoting and ordering - visit [www.dme.net/estore](http://www.dme.net/estore)

### **Plain Housings:**

- » Available in 43 standard mold sizes
- » Assembled with Shoulder Bolts

### **Ejector Bars & Retainers:**

- » Available for 43 standard mold base sizes

## **Classic Series Ejector Housings, Ejector Bars and Retainers**

Classic Series Ejector Housings, Bars and Retainers are not stocked, but are made-to-order to the DME Classic A & B-Series Mold Base specifications

### **Classic Housings:**

- » Available in 43 standard mold sizes
- » Assembled with Shoulder Bolts
- » Predrilled for Assembly Screws and Leader Pin Vents

### **Classic Ejector Bars & Retainers:**

- » Predrilled for Return Pins and Stop Pins

